

## Catalogue of LED Tubes

### A. T8 LED Tube

#### a. SMD2835 Type T8 LED Tube



LED Chips: SMD2835  
 Size: 600mm, 900mm, 1200mm, 1500mm, 1800mm, 2400mm  
 Power: 10W, 14W, 18W, 20W, 25W, 38W, 42W  
 Lumen: 90~100lm/W  
 PF: >97%  
 CIR: >80  
 Voltage: AC85~265V, AC85~277V  
 CCT: 2700~7000K  
 Sockets: G13 (2pins), FA8 (one pin), R17D (HO socket)  
 PC Cover: Clear, milky cover



**G13**



**FA8**



**R17D/HO Socket**

#### b. SMD3528 Type T8 LED Tube

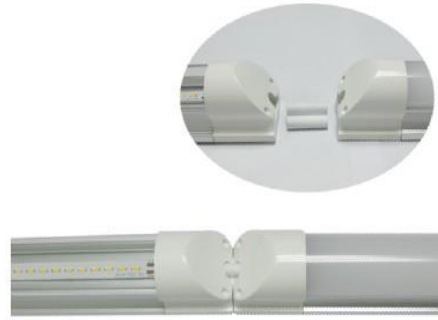


LED Chips: SMD3528  
 Size: 300mm, 600mm, 900mm, 1200mm, 1500mm, 1800mm, 2400mm  
 Power: 5W, 10W, 12W, 18W, 20W, 25W, 36W, 40W  
 Lumen: 90~100lm/W  
 PF: >97%  
 CIR: >80  
 Voltage: AC85~265V, AC85~277V  
 CCT: 2700~7000K  
 Sockets: G13 (2pins), FA8 (one pin), R17D (HO socket)  
 PC Cover: Clear, milky cover

#### c. Integrative T8 LED Tube



LED Chips: SMD3014  
 Size: 600mm, 900mm, 1200mm, 1500mm, 1800mm  
 Power: 10W, 14W, 18W, 25W, 30W  
 Lumen: 90~100lm/W  
 PF: >95%  
 CIR: >80  
 Voltage: AC85~265V  
 CCT: 2700~6500K  
 Sockets: no fixture needed, can be installation directly  
 PC Cover: Clear, milky cover



d. U Shape T8 LED Tube



LED Chips: SMD3014  
 Power: 18W  
 LED Qty: 182pcs  
 Input Voltage: AC85~277V  
 CCT: WW, NW, CW  
 PF: >97%  
 CRI: Ra ≥ 72  
 Beam angle: 120 °  
 Lumen: 1550-1850LM  
 PC Type: Milky, Striped



## B. T5 LED Tube

a. Integrative T5 LED Tube



LED Chips: SMD3014  
 Size: 600mm, 900mm, 1200mm, 1500mm  
 Power: 5W, 10W, 15W, 21W  
 Lumen: 90~100lm/W  
 PF: >95%  
 CIR: >80  
 Voltage: AC85~265V  
 CCT: 2700~6500K  
 Sockets: no fixture needed, can be installation directly  
 PC Cover: Clear, milky cover

## b. Normal T5 LED tube (SMD3014) with bracket



LED Chips: SMD3014  
 Size: 600mm, 900mm, 1200mm, 1500mm  
 Power: 5W, 10W, 15W, 21W  
 Lumen: 90~100lm/W  
 PF: >95%  
 CIR: >80  
 Voltage: AC85~265V  
 CCT: 2700~6500K  
 Sockets: with bracket  
 PC Cover: Clear, milky cover

## c. Normal T5 LED tube (SMD3528) with bracket



LED Chips: SMD3528  
 Size: 600mm, 900mm, 1200mm, 1500mm  
 Power: 3W, 5W, 8W, 11W  
 Lumen: 90~100lm/W  
 PF: >95%  
 CIR: >80  
 Voltage: AC85~265V  
 CCT: 2700~6500K  
 Sockets: with bracket  
 PC Cover: Clear, milky cover

## C. 2G11 LED Tube



LED Chips: SMD2835  
 Size: 225mm, 320mm, 415mm, 535mm  
 Power: 8W, 12W, 15W, 18W, 22W  
 Lumen: 90~100lm/W  
 PF: >97%  
 CIR: >80  
 Voltage: AC85~265V, AC85~277V  
 CCT: 2700~7000K  
 Sockets: 2G11 (4pins)  
 PC Cover: Clear, striped, milky cover

## D. Circular LED Tube



LED Chip: SMD3014  
 Size: 30mm\*205mm/225mm/300mm/375mm  
 Power: 11W, 12W, 18W, 22W  
 Lumen: 90~100lm/W  
 PF: >97%  
 CIR: >80  
 Voltage: AC85~265V  
 CCT: 2700~7000K  
 Sockets: G10Q  
 PC Cover: Clear, milky cover

